



**CNC ROUTERS
CNC PLASMA CUTTERS
LASER ENGRAVER CUTTERS
CNC MILLS & CNC LATHES
WATERJET
CAD/CAM SOFTWARE**



**Computerized Tools For Transforming
Ideas Into Reality**



DIGITAL FABLAB PRODUCTS FOR STEM, CAREER, & TECHNICAL EDUCATION

Forest Scientific Competitive Advantages

The more research you do, the more convinced that although Forest Scientific Corporation may not always be the lowest price, it is the best quality, value, and best choice for your school.

1. **Made in the USA** at our world headquarters in Tionesta, PA.
2. **Single Source, On-Site, Parts & Labor 36 month warranty** on all new CNC machines made by Forest Scientific Corporation. Most of our competitors warranties are 1 year and parts only. This means that you will save the \$3,000.00- \$7,500.00 that others charge to have someone come on-site per visit from their factory if a problem occurs during the warranty. **Do not assume other manufacturers will come to your location for free. They won't. Many do not offer on-site service for any price.**
3. **On-site training** is available for you and your students to ensure a successful start. It is more effective for initial training to be on your own equipment than to go to a training site. With your approval, students are trained to assist and help train other students. **Written & video tutorials** and curriculum are available to show your students while teaching classes. Additional training is available on-site, at one of our training centers, and over the internet.
4. **Free phone and internet support is available nearly 24/7.** Versus being charged by the minute during restricted office hours to get help. You can talk to someone in the evening and on weekends so you are not limited to office hours. Even our CEO freely gives out his cell number to call or text.
5. Unless otherwise specified, **all FSC machines come fully assembled.** Most of our competitors erector set kits will require 40-80+ hours of your time to assemble. Our machines are often running within an hour of arrival if the electricity & airline are ready. Buy a machine, not a box of parts.
6. **Our CNC controls connect to the computer via USB or Cat 5**, not outdated parallel port, serial port, ISA ports, or other port that require a DOS or other outdated computer. **Do not assume that the technology is current.** Many of the best marketed products are very out of date.
7. Hardened, profiled, made in USA, **Precision NSK or THK linear ways and bearings not just wheels on plate steel or angle iron.** These machines cannot be bumped out of place like most of the machines in the same price range. The grease fitting on each linear bearing ensure a dependable life.
8. **All our CNC machines use industry standard Fanuc style G&M codes**, not a proprietary language. Thus you are teaching marketable skills, not just playing with a dead end *toybot*. You can **use any CAD/CAM software producing industry standard G-Codes** such as Mastercam, Surfcam, Edgecam, Enroute, Vcarve, Aspire, Cut2D, Fusion 360, SolidWorksCam, Rhinocam, Inventor with HSM, and more.
9. We use more powerful stepper & servo motors on our machines to be more reliable.
10. **Welded steel frames**, and structural aluminum hold up better in the long term than bent sheet metal and bolted angles because they will not work loose or get out of alignment over time.
11. FSC machines have an Emergency Stop and safety reminders for users to operate the machine safely.
12. Forest Scientific Corporation machines and upgrades are designed to be updated at a low cost when technology changes.
13. **Our local dealers are caring professionals providing local, on-site support second to none.**



Dear Educators:

Thank you for reviewing this edition of our educationally priced catalog. Thriving through the age of Covid we have all needed to make changes and adapt. Prior to that time our mobile maker spaces were used to share equipment between schools, recruitment of students into more advanced programs, and other outreach programs. During Covid mobile maker spaces allowed for social distancing and made it possible to work in a safer outdoor environment. In some communities after school programs were able to stay active. We can equip your van or trailer, or provide a turnkey package. Some trailers and vans are set up to work in, while others are designed primarily for transporting equipment. Factors affecting how they are used include the climate, how long the equipment will be in any one place, and the focus of it's use.

You may have noticed our new logo above on the left. Our logo had the old look for the last 30 years and it was due to be updated with a new high tech look for modern times. It is what many customers have called our equipment for a long time. I often hear clients say "I have a Forest CNC."

We manufacture everything in the United States in Tionesta, PA and Phoenix, AZ. Forest Scientific Corporation provides a 36 month single source, on-site parts & labor warranty on all new machines we manufacture unless otherwise noted, a 24 month on-site parts & labor warranty on Laser engraver cutters, and an 18 month on-site warranty on all upgrades and used machines. We provide on-site training and Project Based Curriculum. When you have any questions or need creative strategies to finance your order, please do not hesitate to call/text my cell +1-412-726-0574. or call 1-800-956-4056 X 1001.

TABLE OF CONTENTS

PAGE#	ITEM
2	Competitive Advantages
3	Letter & TOC
4	FabBot Desktop Series Routers
5	Fabbot ATC Router
6	Fabbot & Titan Router
7	MakerFab & HS Routers
8	Commercial grade ATC Routers
9	Convert-A-Table Plasma Router Combo
10	Fabbot & Titan Plasma Cutters
11	MakerFab & HS Plasma Cutters
12	CNC Pipe Cutter Plasma
13	HD Wood & Metal Lathes
14	Milling Machines
15	Mitey Series Desktop CNC Wood & Metal Lathes, Mill, & Router
16	Professional WaterJets
17	Lasers Wood & Metal Cutting
18	Upgrade older CNC's to current technology
19	Upgrade older CNC's to current technology
20	Handheld Fiber Laser Welder, Cutter, and Cleaner
21	Handheld Fiber Laser Cleaner
22	BT Series Bench top Routers & Software
23	QR Codes for brochures and order forms
24	Back Cover Plaser -Plasma and FiberLaser options for cutting metal

Sincerely,

John E. Martincic
President, CEO
johnm@forestcnc.com



*All pricing & specifications subject to change without notice
This Catalog pricing effective 10/1/2023*

All Trademarks belong to their respective owners

FabBot Desktop Routers

Precision CNC Machines For Demanding Applications

These machines come turn-key with a 3 year warranty, control computer, and unlimited phone and online tech support.



FabBot Micro

FabBot Desktop Series CNC Router Models

Include: Aluminum T-Slot table, Hold Downs, 1-1/4HP router, wrenches, CAD/CAM, training tutorials, and starter set of bits. Operates on 110V 15A

FabBot Micro 9" x 9" x 3" 229 x 229 x 76mm \$ CALL
Optional safety Shield 9" x 9" \$ CALL

FabBot 14" x 14" x 6" 355 x 355 x 76 mm \$ CALL
Optional safety enclosure 14" x 14" \$ CALL
On Mobile Maker Cart with enclosure \$ CALL

FabBot 24" x 18" x 6" 609 x 457 x 76mm \$ CALL
Optional enclosure w/stand for 24"X18" \$ CALL
Optional removable Vac Table Sys2418 \$ CALL

FabBot 24" x 24" x 6" 609 x 609 x 76mm \$ CALL
Optional enclosure w/stand for 24"X24" \$ CALL
Optional removable Vac Table Sys 2424 \$ CALL

FabBot 36" x 24" x 6" 914 x 609 x 76mm \$ CALL
Optional enclosure w/ stand for 36"X24" \$ CALL
Optional removable Vac Table Sys3624 \$ CALL



FabBot1414 with mobile Maker Cart

Options

Upgrade to 1.5HP 110V High Freq spindle \$ CALL
Dust control system with Dust shoe, hose and Vacuum \$ CALL
Rotary fourth Axis \$ CALL
Wireless Jog Pendant \$ CALL

For FabBot 24" X 24" or larger able to engrave / cut
44W Diode Laser (requires full enclosure) \$ CALL



FabBot36X24 with Vac Table on enclosed steel stand

FEATURES

- * Constructed NSK Linear Rails & Bearings
- * Fully assembled machine
- * Heavy duty construction
- * 3-D 3-Axis with Continuous Contouring
- * Runs Industry Standard G-Codes
- * On-Screen Simulation
- * Compatible with most CAD/CAM Systems
- * Optional Dust hood

FabBotATC Router

FEATURES

- * Constructed NSK Linear Rails & Bearings
- * Fully assembled machine
- * Heavy duty construction
- * 3-D 3-Axis with Continuous Contouring
- * Runs Industry Standard G-Codes
- * On-Screen Simulation
- * Compatible with most CAD/CAM Systems
- * Optional Dust hood



\$ CALL

**TurnKey
Package with:
Stand
Enclosure
Computer**

APPLICATIONS

- * Sign Making
- * Plastics Fabrication
- * Furniture Making
- * Model Making
- * Education



FabBot ATC 38X24X6 ATC with 1.5 HP High Freq ATC Spindle and 6 pos ATC

Usable work area
38"X24"X6" 965mm X 610mm X152mm

Utility Requirements
110V AC 20A or 240V 10A
90 PSI Compressed Air not included

Options:

- 6" Rotary 4th Axis \$ CALL
- Vacuum Table With Vacuum pump \$ CALL
- Digital Reverse engineering probe \$ CALL
- Wireless Handheld MPG Jog pendant \$ CALL
- Quiet Air Compressor \$ CALL
- Dust Collection System \$ CALL
- Custom sizes and spindles \$ CALL

CNC Routers

Most popular models in schools and smaller shops

All pricing and specifications subject to change without notice.



FabBot Platform Series Router Models

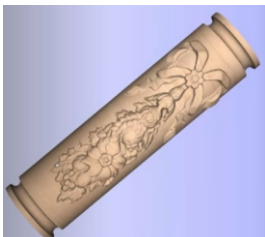
Each of the fully assembled CNC Routers below include Control Computer, CAD/CAM software, tooling set, MDF Table with Aluminum T Slots, Clamping system, curriculum, 1-1/4 HP Router, wrenches operates on 110V 20A
The floor space is about 2' larger than the work area. Maximum 1.5HP spindle.

FabBotR 48" x 20" CNC Router	\$ CALL
FabBotR 48" x 48" CNC Router	\$ CALL
FabBotR 48" x 96" CNC Router	\$ CALL

(ALL X 20" Models fit through standard 36" door)

Key Points:

- *Entry Level economy system
- *Can make anything that higher end can make
- *Easiest model to get up stairs due to lighter weight with structural aluminum
- *Complete Turnkey package
- *Best in it's comparable price class
- * Most popular for those on a tight budget
- *Single Source 3 year, on-site, parts & labor warranty



4th Axis Example
The 4th Axis allows the user to wrap a 2D or 3D image around the material or replicate a part the would usually require a lathe.

Titan Series Router Models

The Titan Routers are cost effective heavy duty machines made of structural aluminum. The floor space is about 2' larger than the work area. This is a great model for upstairs and other installations requiring special handling since they are lighter weight than steel. Includes Control Computer, CAD/CAM software, tooling set, MDF Table with Aluminum T Slots, Clamping system, curriculum, 3-1/2 HP Router, wrenches, operates on 110V 20A

TitanR 24" x 20" CNC Router 609x508mm	\$ CALL
TitanR 48" x 20" CNC Router 1220x508mm	\$ CALL
TitanR 48" x 48" CNC Router 1220x1220mm	\$ CALL
TitanR 48" x 96" CNC Router 1220x2438mm	\$ CALL
TitanR 60" x 120" CNC Router 1524x3048mm	\$ CALL

Key Points:

- Heavier Duty than FabBot with larger structural alum.
- *Can be disassembled for smaller doors & take upstairs
- *Comparable features to MakerFab except AL frame
- *Complete Turnkey package
- *Best in it's comparable price class
- *Tutorials available
- *True 3D with continuous contouring
- *Single Source 3 year, on-site, parts & labor warranty



Maker-Fab Series Router Models

The Maker-Fab Routers are cost effective heavy duty machines made of a welded steel frame with 2" tubular steel. The extra rigidity is great for handling the abuse of students and will last for years. Includes Control Computer, CAD/CAM software, tooling set, MDF Table with Aluminum T Slots, Clamping system, curriculum, 3-1/2 HP Router, wrenches, operates on 110V 20A

RMF 24" x 20"	CNC Router	\$ CALL
RMF 48" x 20"	CNC Router	\$ CALL
RMF 48" x 48"	CNC Router	\$ CALL
RMF 48" x 96"	CNC Router	\$ CALL
RMF 60" x 120"	CNC Router	\$ CALL

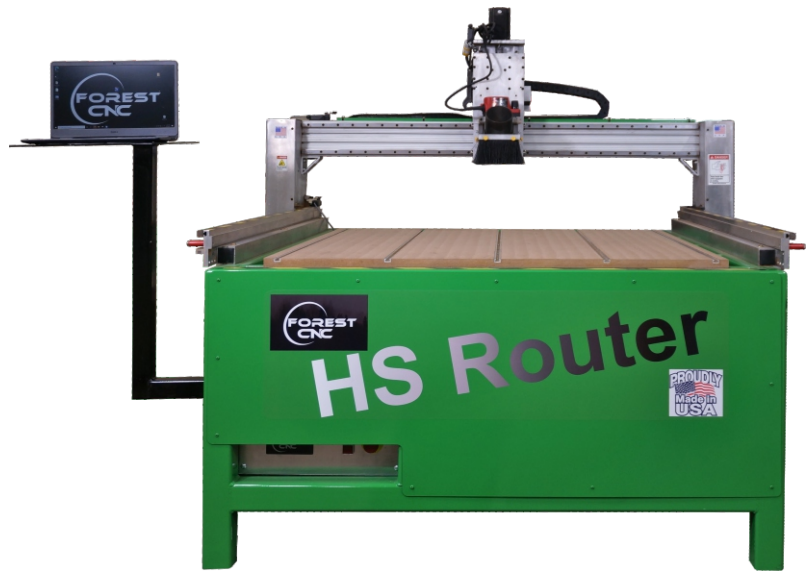
Key Points:

- *Can make anything that higher end can make
- *Heavy Duty Welded Structural Steel construction
- *Complete Turnkey package
- *Best in it's comparable price class
- *Most popular series high school wood shop
- *True 3D with continuous contouring and smoothing
- *Auto Z sensing for part zero
- *Unlimited file size for complex 3D parts
- *Homing sensors X,Y,& Z Axis for a machine home
- *Single Source 3 year, on-site, parts & labor warranty

Vacuum Table systems includes pump & Table

24X24 Vac System upgrade 110V	\$ CALL
48X24 Vac System upgrade 110V	\$ CALL
48X48 Vac System upgrade 220V3PH	\$ CALL
48X96 Vac System upgrade 220V3PH	\$ CALL
60X120 Vac System upgrade	\$ CALL
If Vac Table Sys added later add	\$ CALL

Other Options	
3D Digitizing probe	\$ CALL
6" Fourth Axis	\$ CALL
Wireless Jog Pendant	\$ CALL
Desiccant Dryer System for ATC's	\$ CALL
Pneumatic cooler for plastics & metals	\$ CALL



HS Series Router Models

The HS-Series Routers are heavier duty machines made with a larger tubular welded steel frame with 3" tubular steel. The extra rigidity is great for handling the abuse of students and will stand the test of time with 24/7 commercial use. It's Closed loop HyBrid Servo control assures accuracy at the fastest speeds. Includes Control Computer, CAD/CAM software, tooling set, MDF Table with Aluminum T Slots, Clamping system, curriculum, 3-1/2 HP Router, wrenches, operates on 110V 20A

HSR 24" x 24"	CNC Router 609x609mm	\$ CALL
HSR 48" x 24"	CNC Router 1220x609mm	\$ CALL
HSR 48" x 48"	CNC Router 1220x1220mm	\$ CALL
HSR 48" x 96"	CNC Router 1220x2438mm	\$ CALL
HSR 60" x 120"	CNC Router 1524x3048mm	\$ CALL

Key Points:

- *Complete Turnkey package
- *All of the features of the Maker-Fab
- *Closed Loop Hybrid Servos for Fastest Reliable Cut
- *Heaviest Duty Welded Structural steel under \$50K
- *Most popular robotics, CTE and commercial use
- *Faster output of 3D and Complex Cabinet Parts
- *Single Source 3 year, on-site, parts & labor warranty

Aluminum T-Slot Table

48X20 or 24 T-Slot Table upg.	\$ CALL
48X48 T-Slot Table upgrade	\$ CALL
48X96 T-Slot Table upgrade	\$ CALL
60X120 T-Slot Table Upgrade	\$ CALL

Spindle upgrades

2.5 HP 1PH High Freq. spindle	\$ CALL
6 HP 3 PH High Freq. spindle	\$ CALL
12 HP 3 PH High Freq. spindle	\$ CALL
1.5 HP 110V H. Freq. 6 pos ATC spindle	\$ CALL
6 HP 3Ph H. Freq. 6 pos ATC spindle	\$ CALL
6 HP Manual quick change Spindle	\$ CALL

AUTOMATIC TOOL CHANGER ROUTERS

Turnkey package with heavy duty hybrid closed loop servo controls, ER32 tool holders, collet set, tooling set, control computer, tutorials, auto tool measurement, 3 year on-site parts and labor warranty. ideal for cabinet making, robotics, and other higher level high school and CTE programs.

HSR-ATC 4' x 4' with 6 HP & 8 position ATC	1220x1220mm	\$ CALL
HSR-ATC 4' x 8' with 6 HP & 8 position ATC	1220x2438mm	\$ CALL
HSR-ATC 5' x 10' with 6 HP & 8 position ATC	1524x3048mm	\$ CALL

Higher end closed loop servo pro system that knows its location even in an E-stop state and includes the jog pendant and everything in above.

HSRPRO-ATC 4' x 4' with 6 HP & 8 position ATC	1220x1220mm	\$ CALL
HSRPRO-ATC 4' x 8' with 6 HP & 8 position ATC	1220x2438mm	\$ CALL
HSRPRO-ATC 5' x 10' with 6 HP & 8 position ATC	1524x3048mm	\$ CALL



HSRPRO-ATC 5' x 10' with 23 HP Vacuum table system

Optional Upgrades for all Routers:

Vacuum Table systems includes pump & Table

48X48 Vac System upgrade 220V3PH	\$ CALL
48X96 Vac System upgrade 220V3PH	\$ CALL
60X120 Vac System upgrade	\$ CALL
If Vac Table Sys added later add	\$ CALL

Upgrade 6HP to 12HP ATC Spindle	\$ CALL
3D Digitizing probe	\$ CALL
6" Fourth Axis	\$ CALL
Wireless Jog Pendant	\$ CALL
Pneumatic cooler for plastics & metals	\$ CALL
Desiccant Dryer System for ATC's	\$ CALL

Aluminum T-Slot Table

48X48 T-Slot Table upgrade	\$ CALL
48X96 T-Slot Table upgrade	\$ CALL
60X120 T-Slot Table Upgrade	\$ CALL

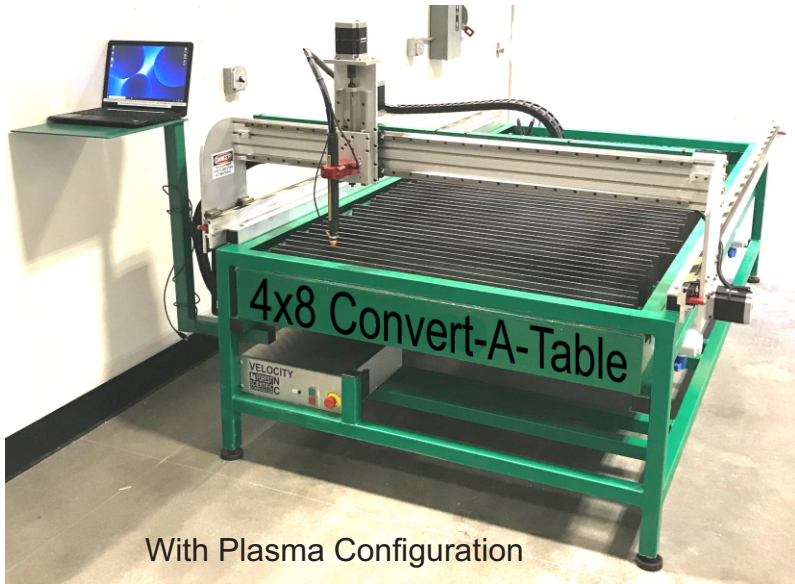


Wireless Jog Pendant

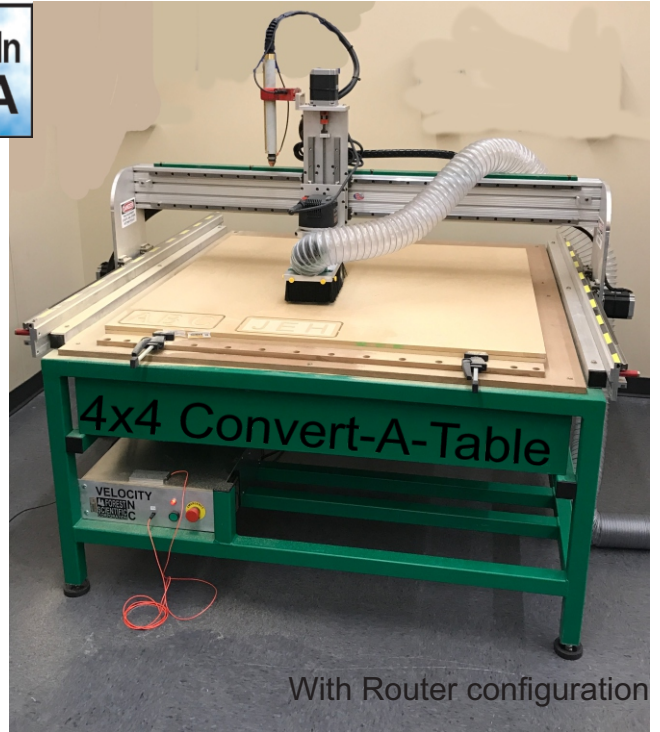
3D Digitizing probe



Convert-A-Table PLASMA CUTTER / ROUTER



With Plasma Configuration



With Router configuration

Convert-A-Table CNC Router / Plasma Models

- MCAT 24" x 20" Convert-A-Table \$ CALL
- MCAT 48" x 20" Convert-A-Table \$ CALL
- MCAT 48" x 48" Convert-A-Table \$ CALL
- MCAT 48" x 96" Convert-A-Table \$ CALL
- MCAT 60" x 120" Convert-A-Table \$ CALL

Includes: Plasma water table, router clamping table, 3-1/2HP router, Hypertherm 45, Automatic Torch height, Break-a-way system, welded steel stand, dust hood, CAD/CAM, Control computer, computer arm, and starter set of bits and deluxe clamp set. Hyperterm 45 requires 240V50A, the rest of the machine Operates on 110V 30A Floor space 2' greater than work area.

Convert-A-Table easily changes from a CNC Router to a CNC Plasma cutter. This is a great option if you have very limited space and only need one function at a time. The disadvantages are that you only have one machine instead of 2 and these machines can not have a vacuum table system due to the conversion between router and plasma. The 48"X20" machine makes it possible to fit through a standard 36" door. With this heavy duty frame that can plow through wood with the robust 3-1/2HP router while the water table is sealed off. Remove the router table and you have the water table for plasma cutting. No other machine is designed to correctly do both Routing and Plasma cutting well. Conversion between the 2 functions takes less than 10 minutes.

Popular CNC Plasma and CNC Router Accessories



For Plasma & ATC Routers

5 Stage Desiccant Drying System \$ CALL

Dust Control Computer Security Cabinet \$ CALL



Dust Collector Package Includes dust collector 100' hose 4 clamps \$ CALL



CNC Plasma Cutters

FabBot CNC Plasma



FabBot Platform Series Plasma Models

Each of the CNC Plasma cutters below include Control Computer, CAD/CAM software, ATH, Hypertherm 45 Plasma system, and training tutorials. 110V 20 A machine 240 V 50A plasma cutter
The floor space is about 2' larger than the work area.

FabBotP 48" x 20" CNC Plasma	\$ CALL
FabBotP 48" x 48" CNC Plasma	\$ CALL
FabBotP 48" x 96" CNC Plasma	\$ CALL

X20" Models fit through standard 36" Door

Key Points:

- *Entry Level low cost system made of structural Alumin
- *Only model without a watertable
- *Can make anything that higher end can make
- *Easiest model to get up stairs due to lighter weight
- *Complete Turnkey package
- *Best in it's comparable price class
- * Automatic Torch Height
- * Magnetic Break-Away
- *Ohmic touch off and automatic Voltage setting
- *Tutorials available
- * Most popular for those on a tight budget
- *Single Source 3 year, on-site, parts & labor warranty

Titan CNC Plasma



Titan Series Plasma Models

The Titan Plasma cutters are cost effective heavy duty machines made of structural aluminum and come standard with a water table. The floor space is about 2' larger than the work area. This is a great model for upstairs and other installations requiring special handling since they are lighter weight than steel.

TitanP 24" x 20" CNC Plasma	\$ CALL
TitanP 48" x 20" CNC Plasma	\$ CALL
TitanP 48" x 48" CNC Plasma	\$ CALL
TitanP 48" x 96" CNC Plasma	\$ CALL
TitanP 60" x 120" CNC Plasma	\$ CALL

Key Points:

- *Heavier Duty than FabBot
- *Watertable Included
- *Can make anything that higher end can make
- *Easiest model to get up stairs due to lighter weight
- *Able to be disassembled to get through narrow doors
- *Complete Turnkey package
- *Best in it's comparable price class
- * Automatic Torch Height
- * Magnetic Break-Away
- *Ohmic touch off and automatic Voltage setting
- *Tutorials available
- * Most popular for difficult installations due to the building
- *Single Source 3 year, on-site, parts & labor warranty

MakerFab CNC Plasma

HS Series CNC Plasma



Maker-Fab Series Plasma Models

The Maker-Fab Plasma cutters are cost effective heavy duty machines made of a welded steel frame with integrated Water Table. The extra rigidity is great for handling the abuse of students and will last for many years.

PMF 24" x 20"	CNC Plasma	\$ CALL
PMF 48" x 20"	CNC Plasma	\$ CALL
PMF 48" x 48"	CNC Plasma	\$ CALL
PMF 48" x 96"	CNC Plasma	\$ CALL
PMF 60" x 120"	CNC Plasma	\$ CALL

Key Points:

- *Watertable Included
- *Can make anything that higher end can make
- *Heavy Duty Welded Structural steel construction
- *Complete Turnkey package
- *Best in it's comparable price class
- * Automatic Torch Height & Magnetic Break-Away
- *Ohmic touch off and automatic Voltage setting
- *Tutorials available
- *Most popular high school model
- *Single Source 3 year, on-site, parts & labor warranty

Plasma Cutter Upgrades and options

Powermax 45 Pierce 1/2" steel and cut up to 7/8"	Comes standard - Best option for most
PowermaxSync 65 Pierce 5/8" steel and cut up to 1"	\$ CALL upgrade
PowermaxSync 85 Pierce 3/4" steel and cut up to 1-1/2"	\$ CALL upgrade
PowermaxSync 105 Pierce 7/8" steel and cut up to 2"	\$ CALL upgrade
High Definition Plasma able to cut 2" thick steel	\$ CALL Upgrade
Optional Torch slip touch off detection	\$ CALL
Optional Engraving head	\$ CALL
Optional HVAC Software	\$ CALL

Micro Adjustable tilt head	\$ CALL
5 Stage Desiccant Drying System	\$ CALL
Wireless Jog Pendant	\$ CALL

HS Series Plasma Models

The HS-Series Plasma cutters are heavier duty machines made with a larger tubular welded steel frame with integrated Water Table. The extra rigidity is great for handling the abuse of students and will stand the test of time with 24/7 commercial use. It's Closed loop HyBrid Servo control assures accuracy at the fastest speeds.

HSPB 48" x 24"	CNC Plasma 1220x609mm	\$ CALL
HSPB 48" x 48"	CNC Plasma 1220x1220mm	\$ CALL
HSPB 48" x 96"	CNC Plasma 1220x2438mm	\$ CALL
HSPB 60" x 120"	CNC Plasma 1524x3048mm	\$ CALL

Key Points:

- *Watertable Included
- *Complete Turnkey package
- *All of the features of the Maker-Fab
- *Adv. Closed Loop Hybrid Servos for Fastest Reliable Cut
- *Heaviest Duty Welded Structural steel const. under \$50K
- *Most popular CTE model and commercial use
- *Single Source 3 year, on-site, parts & labor warranty

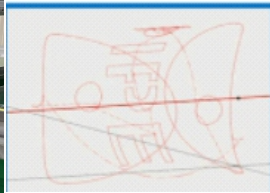
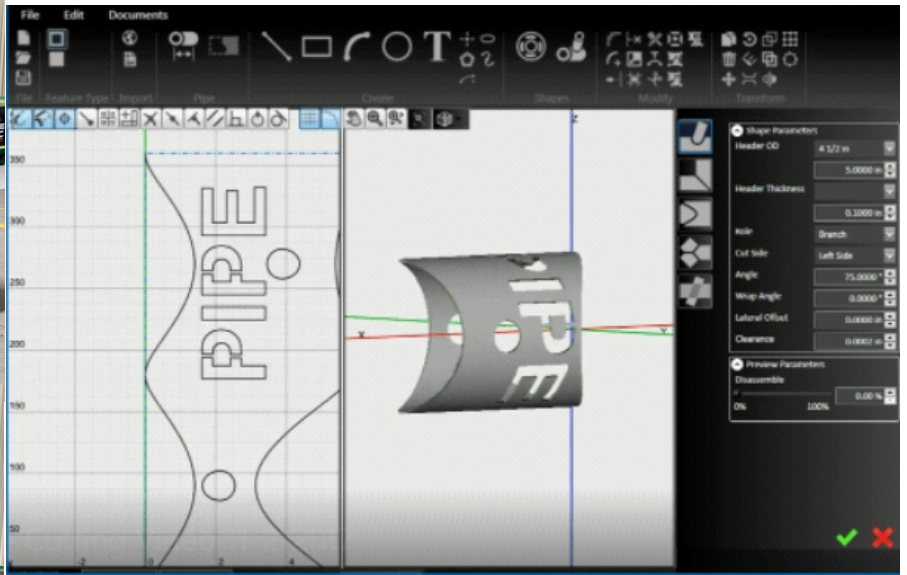
6" pipe Cutter SEE PIPE CUTTING BROCHURE

Dust Control Comp. Security Cabinet \$ CALL

CNC Pipe Cutter Plasma Cutter

PMFP 48" x 48" 1220x1220mm \$ CALL
 PMFP 48" x 96" 1220x2438mm \$ CALL
 PMFP 60" x 120" 1524x3048mm \$ CALL
 Capacity 6" (152mm) Diameter round pipe

Optional manual angle adjustment for bevel angle cut \$ CALL
 Optional upgrade for square pipe \$ CALL
 Optional upgrade for computer controlled beveling \$ CALL



Easily Draw Accurate Pipe Features in CAD

- Round pipe, square and rectangular tube support
- Pipe shape wizard makes perfect cuts for mating pipes of any diameter with a multitude of joints at any angle and any size including T joints, end caps, miter joints, Y joints and through pipes
- Pipe sizing wizard automatically sets OD, and thickness of standard pipe sizes
- 3D solid model of pipe joints includes disassembly to preview what both sides of the joint will look like
- The flattened view allows for easy design of custom patterns of any shape including slots and text
- "Ghost 2D views" show feature wrapping with no interruption
- Fully rotatable solid model view
- Easily import DXF and STL files from other CAD programs



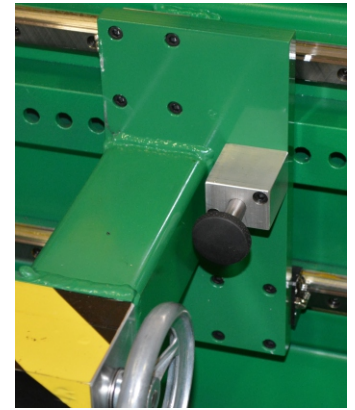
CNC WOOD LATHE



Ready to connect to
Central Dust Collection

WL4000

- * Cut up to a 40" X 10" Part
1016x254mm
- * Hardened Profiled Rails
- * Spindle #2MT int Taper
- * Tailstock #2MT int Taper
- * Ball Drive Screws
- * Anti Backlash Nuts
- * 1, 2, 3 or 5 HP Spindle Motor
- * Ready for dust collector
- * Compatible with CAD/CAM
- * Uses G&M Codes
- * 36 Month On-Site warranty



WL4000 Positive
Locking Tail Stock

Machines:

WL4000 Standard Stepper 120V 20A 1HP
 WL4000HY Hybrid Servo 120V 20A 1HP
 WL4000PRO (faster & 5HP 3PH) 220V 30A 3PH

\$ CALL
 \$ CALL
 \$ CALL

Used machines \$\$ CALL

Replacement cutters \$125.00 Each

HEAVY DUTY CNC METAL LATHE



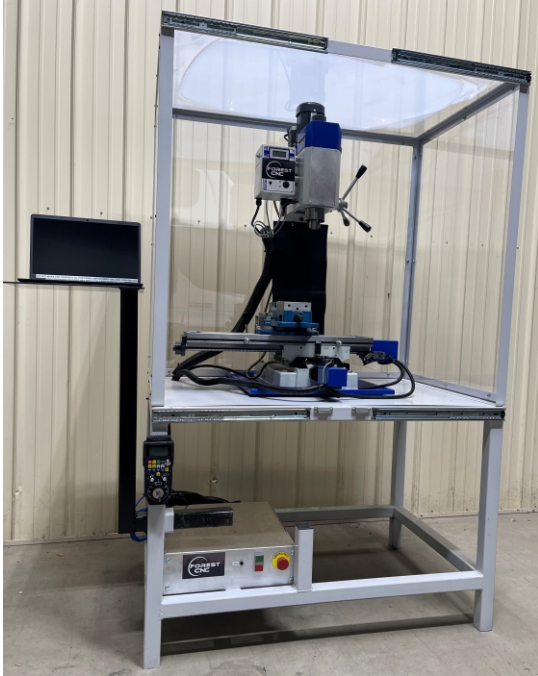
ML246 \$ CALL

Optional Turret \$ CALL

- 3 HP Spindle
- Travels Z 24" X12" 609x305mm
- Swing over Cross slide 6.3" 160mm
- Powerful 1200 oz/in closed loop hybrid servo
- Handheld MPG included
- Quick change tool post included without turret
- 6 inch lathe chuck
- Spindle speed 100-3,500 RPM
- Spindle bore diameter 1.5" 38mm
- Industry standard G-Codes
- Conversational programming
- Easy to see the machine work area
- Lexan Shield
- MADE IN USA

Precision CNC Knee Mill 158-728V-T

\$ CALL



TurnKey Package with:
Stand **Vise** **Enclosure** **Hold Downs**
R8 Collet Set **Tooling set** **Control Computer**

Requires 120V 20A or 240V 10A
 X travel 12" 305mm
 Y Travel 6.6" 168mm
 Z Travel 13" 330mm
 Table Size 27.5" X 7.125" 622mm x 181mm
 Size in full enclosure 48" X 33" X 77" High 650 lbs
 1219mm x 838mm x 1956mm

1 HP Spindle Motor with R-8 Taper spindle
 Options:
 Quick Change tool kit with 4 tool holders \$ CALL
 1/4", 3/8", 3/8", 1/2"

Quick Change drill chuck for above kit \$ CALL
 Quick Change Tapping Head package \$ CALL
 4" - 4th Axis \$ CALL
 Pneumatic cooler for plastics & metals \$ CALL
 Optional Liquid Mist Cooling system \$ CALL
 Robotics integration interface \$ CALL

Precision CNC Bed Mill



**Enclosed
or
Open**



Materials:

Steel

Aluminum

Brass

Titanium

Wood

Plastics

Almost anything

Competitive Advantages

1. Arrives fully assembled
2. Will fit through 36" Door
3. Runs on G-Codes
4. Much faster than others
5. Significantly stronger spindle options
6. Table large enough for a vice and rotary axis

Rigid Fixed Gantry with moving bed available in the following sizes:

2'X20"-2.5 HP Spindle	610mm x 508mm	\$ CALL
2'X20"-6 HP Spindle	610mm x 508mm	\$ CALL
2'X20"-12 HP Spindle	610mm x 508mm	\$ CALL
2'X20"-6 HP ATC Spindle with 4 Position ATC	610mm x 508m	\$ CALL

Options:
 6"-4th Rotary Axis \$ CALL
 Enclosure \$ CALL

Optional accessory kit \$ CALL includes Collet Set
 Assortment of End Mills, 6" Vise, Hold Down Set

MITHEY SERIES

Machines for educational training, prototyping, design, and industrial production worldwide

MITHEY MILL

X - Travel 9" (23cm)
 Y - Travel 5" (13cm)
 Z - Travel 6.25"(15.88cm)
 Table 2.75" X 13"
 (7 X 33 cm)
 110V 20A



For Aluminum, Brass,
 Wax, Plastics

MMSV Stepper Standard Version \$ CALL

Mitey Mill Options:

4" Vise \$ CALL
 4" 4th Axis \$ CALL
 10K RPM Spindle \$ CALL

MITHEY LATHE

X - Travel 4.25" (10.8cm)
 Center Distance 8"(20cm)
 Swing over bed 3.5" (8cm)
 Swing over carriage 1.88"
 (4.78cm)
 110V 20A



For Aluminum, Brass,
 Machinable Wax, Plastics

MLSV Stepper Standard Version \$ CALL

Mitey Lathe Options:

Deluxe QC tooling package \$ CALL
 Threading capability \$ CALL
 Knurling tooling \$ CALL

MITHEY WOOD LATHE

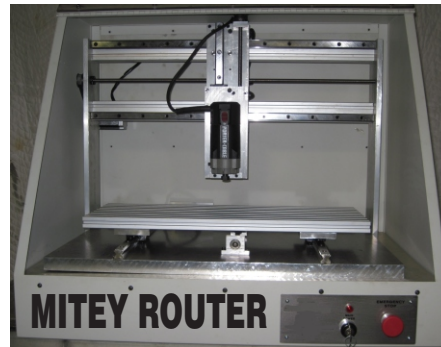
18"X 4" Capacity
 (45 X 10 cm)
 110V 20A



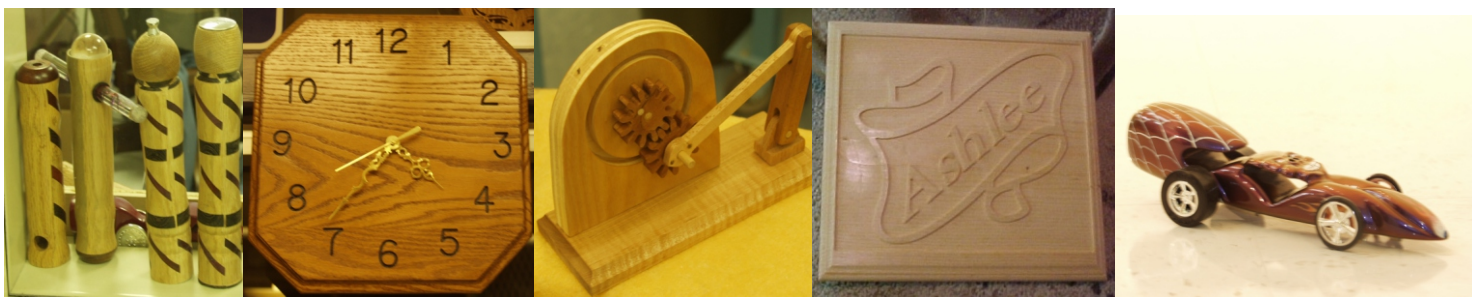
MWLS Stepper Version \$ CALL

MITHEY ROUTER

Travels
 18"X x 9"Y x 6.5"Z
 (45X x 23Y x 16Z cm)
 110V 20A
 1-1/4 HP Spindle

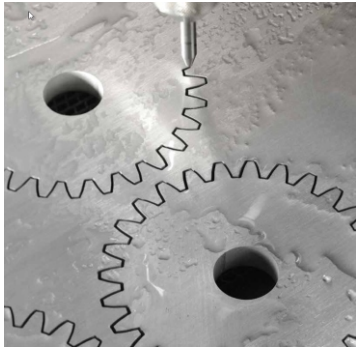


MRLS Stepper Version \$ CALL
 Upgrade to HF Spindle \$ CALL
 4th Axis \$ CALL



ACCUJET Professional WaterJet

Precisely cut nearly any material even Stainless & Titanium



Turnkey System for Success

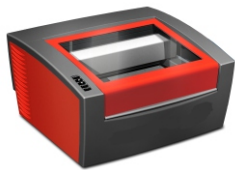


Model	Travel	Estimated floor space	Price
ACCU48X24 Waterjet 50	50" X 26" Y	12'X12'	\$ CALL
ACCU48X48 Waterjet 50	50" X 50" Y	12'X14'	\$ CALL
ACCU48X96 Waterjet 50	50" X 98" Y	12'X18'	\$ CALL
ACCU60X120 Waterjet 50	60" X 120" Y	12'X18'	\$ CALL
Optional Tilting head 4th Axis for angled cuts			\$ CALL



HyPrecision Predictive WaterJet MiteyJet 48X20 \$119,000.00 Call for other options and sizes

Co2 Laser Engraver / Cutters



CO2 lasers are for cutting woods, plastics, leather, fabrics and can engrave glass, anodized metals

Call 1-800-956-4056 for our laser catalog

Fiber Lasers



Fibers lasers are only used for cutting and engraving metals

We offer many different configurations for just engraving and those that can cut 1/2" steel

Call 1-800-956-4056 to discuss your application so that we can provide the best configuration for your applications.

Laser Service



If you have a laser that you do not know how to use or needs service, we may be able to assist.

Call 1-800-956-4056 for a custom quote depending on what needs done and your location.

ALL LASERS REQUIRE FUME EXHAUST

Recommended Portable blower exhaust kit for all systems \$ CALL

Optional In-Room Filtration Systems (for when you can't vent outside)

Mobile base fume extraction carts for desktop Lasers \$ CALL

For Free standing lasers 24" x12" and larger \$ CALL

GET OLD MACHINES OUT OF THE JUNK PILE

We Service all brands

Stretch your budget

Unlike new equipment, upgrades usually do not come out of your own budget. Most upgrades are financed through other budgets including: district repair budgets; technology funds since we are changing the computer in the machine; or through special needs funds. Once these machines are upgraded, they will be much easier for a special needs student to be successful. Upgrades often make it possible for the vocational-technical supervisor to tap into funds that otherwise would not be available. Equipment purchased under Perkins can often be repaired under Perkins. Also, it is often much easier to get school boards to approve repairs on existing equipment than purchasing new equipment. Depending on the machine, most upgrades range from 1/2 to 1/20th of the replacement cost of a machine and will usually allow it to operate better than new.

CNC Upgrade Price: Includes everything needed - software, electronics, install, 18 month warranty, and training. TurnKey package includes computer and CAD/CAM

Upgrade Older Forest Scientific Velocity based Controls

\$ CALL

Upgrade Older Forest Scientific Centroid based controls

Call for quote

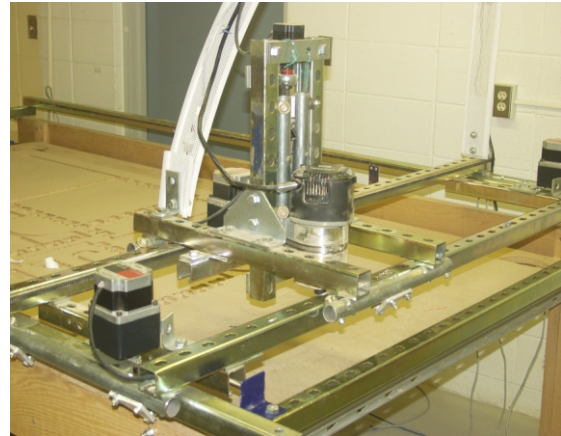


Light Machines
CNC Router
VC-LMCR
Upgrade \$ CALL

IF YOU DO NOT SEE YOUR MACHINE, CALL FOR A QUOTE



Light Machines
Spectralight Mill
or Spectralight Lathe
Upgrade \$ CALL



All Shopbot Routers
VC-SHOPB Upgrade \$ CALL

OR

VC-SHOPBCL \$ CALL for Closed loop version

IF YOU DO NOT SEE IT HERE CALL

EZROUTER Routers \$ CALL

Techno LC Servo Routers \$ CALL

Techno Routers with ATC \$ CALL

Plasma cutter upgrades, Techno, TORCHMATE, EZROUTER \$ CALL

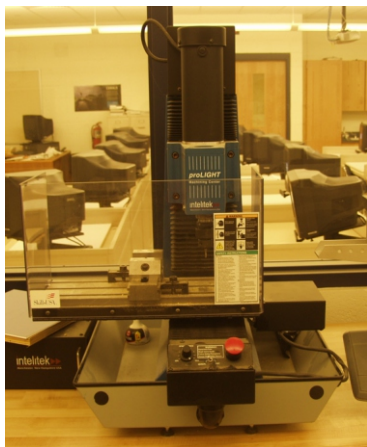
XYZ Millenium Routers \$ CALL

XYZ 4x4 & 4x8 Routers w/o ATC \$ CALL

XYZ 4x4 & 4x8 Routers with ATC \$ CALL

PlasmaCam we recommend trade up to our Fabbot series or better plasma call for special offer.

Notebook CAD/CAM/CNC workstation \$ CALL



Light Machines
Pro Light Lathe or Mill
VC-PL
Upgrade \$ CALL
ProLight with ATC \$ CALL



All Techno Routers
Gantry style & Davince
Under 2'X2'
VC-Techno
Upgrade \$ CALL
Servo \$ CALL

For a fraction of replacement cost, update old DOS machines to Windows



All Phoenix/ Magnum/
Paxton Wood Lathes
VC-PMPPL
Upgrade \$ CALL



All Phoenix/ Magnum/
Paxton Routers VC-PMPPR
Upgrade \$ CALL
Vac pump \$ CALL



All Paxton Lathes VC-PPL
Upgrade \$ CALL

All Paxton Mills VC-PPM
Upgrade \$ CALL



D&M 3 or 4 & Lab Volt 5400 Mills
VC-DMM34 Upgrade \$ CALL

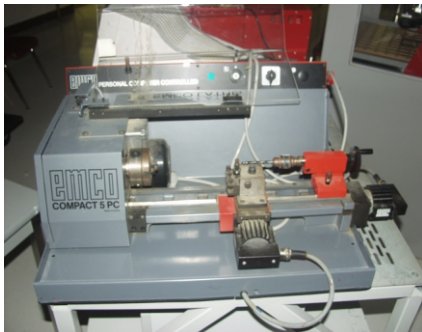
D&M 3, 4, or Lab Volt 5300 Lathe
VC-DML34 Upgrade \$ CALL



D&M 5 or Lab Volt 5500
VC-DML5
Upgrade \$ CALL



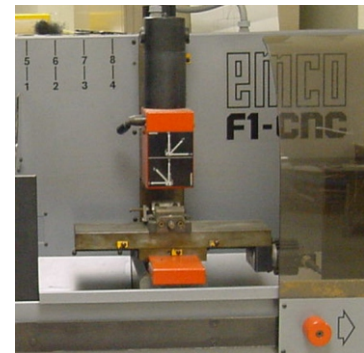
D&M 5, 6 or Lab Volt 5600
VC-DMM5
Upgrade \$ CALL



All Emco Compact 5 Lathes
VC-CP5L
Upgrade \$ CALL



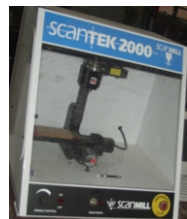
Emco Compact 5 Lathes
If it has a Tool Turret
Add VC-CPTT \$ CALL



ALL Emco F1 Mills
VC-EF1M
Upgrade \$ CALL



All Denford
Desktop Routers
VC-DFMR
Upgrade \$ CALL



All Denford MicroMills,
Scantek, LabVolt, B&G,
& Midwest
VC-DFMM
Upgrade \$ CALL

All Denford MicroLathes,
Scantek, LabVolt, B&G,
& Midwest
VC-DFML
Upgrade \$ CALL

2KW 3 IN 1 Handheld Laser Welder / Laser Cleaner / Laser Cutter

Advantages of FiberLaser welding Turnkey Welding Package \$ CALL


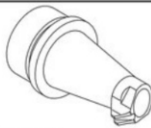



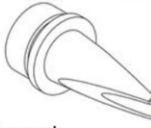




Relatively Short learning curve
 More Efficient
 Weld Steel or Aluminum

FLW Spare Parts & Consumables
 Package excludes wire \$ CALL



Manufactured in China for Forest Scientific Corp
 Warranty and support by ForestCNC in USA

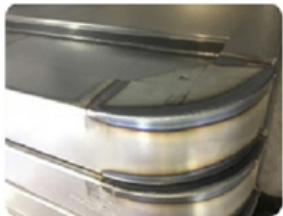
 Copper nozzle Number: AS-12 Remark: wire feeding 0.8mm/ 1.0mm/1.2mm	 Copper nozzle Number: BS-16 Remark: wire feeding 1.6mm	 Copper nozzle Number: CS-12 Remark: wire feeding 0.8mm/ 1.0mm/1.2mm	 Copper nozzle Number: ES-12 Remark: wire feeding 0.8mm/ 1.0mm/1.2mm
 Copper nozzle Number: FS-16 Remark: wire feeding 1.6mm	 Copper nozzle Number: C Remark: No wire feeding	 Cutting nozzle : C Remark: Single Layer 1.5mm	 Graduated tube

Designed for continuous use
 1 year Warranty

Able to weld up to 5mm Carbon Steel, 4mm Stainless Steel, and 4mm Aluminum

5mm = .197" 4mm = .157"

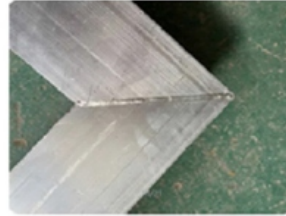
220V single phase



Sheet metal
 outer corner



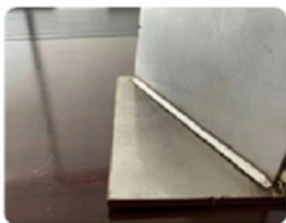
Round tube



Aluminum



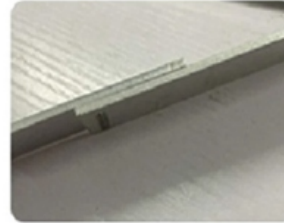
Flat sheet



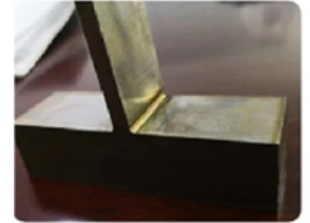
Sheet metal
 inner corner



Flange



Overlap



Aluminum inner corner

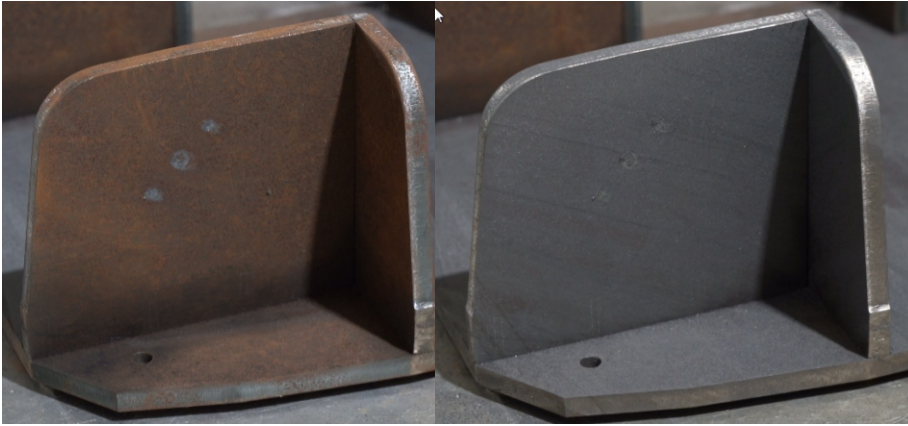
Professional 2000W Handheld Laser Cleaning

Turnkey Cleaning System \$ CALL

FLC Cleaner Spare Parts & Consumables Package \$ CALL

Designed for continuous use - 1 year Warranty

Cleaning width variable from 0-11.5" (0-300 mm)



Manufactured in China for Forest Scientific Corp
Warranty and support by ForestCNC in USA

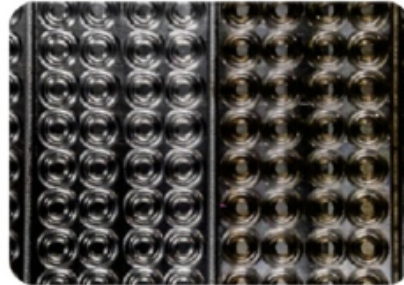
Easily remove rust or paint

Remove rust from tools

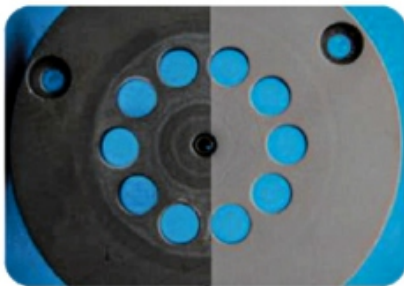
Make old scrap metal usable



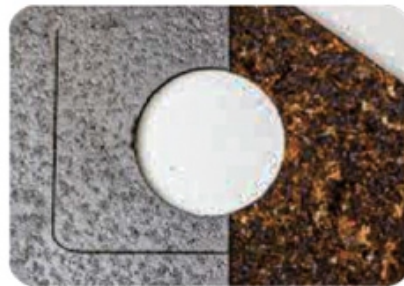
Mold Cleaning



Sealing Ring Mold Cleaning



Optical Fixture Cleaning



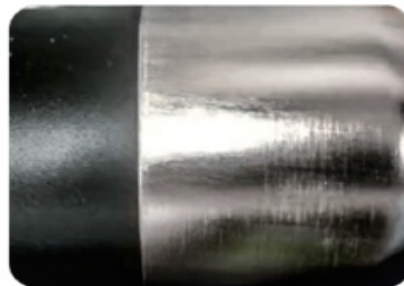
Laser Rust Removal



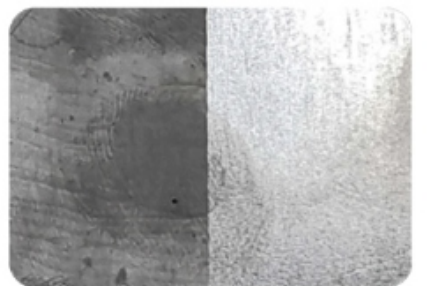
Food Container Cleaning



Laser Degreasing



Insulation Cup Paint Removal



Titanium Alloy Cleaning

BenchTop Series Router Models

Heavy Duty Desktop. Great for tight budgets, limited space, when your shop is upstairs, or getting through narrow doorways



Work Area

BT 24"X 24" 3-1/2 air cooled spindle \$ CALL

BT 36"X 24" 3-1/2 air cooled spindle \$ CALL

BT 48" x 24" 3-1/2 air cooled spindle \$ CALL

BT 60" x 24" 3-1/2 air cooled spindle \$ CALL

Optional Upgrade to 1.5 HP ATC Spindle with 6 position ATC add \$ CALL

Optional stand for any above \$ CALL

Optional 4th Axis with 6" capacity and tailstock \$ CALL

Optional wireless Jog pendant \$ CALL

Optional Dust collection system \$ CALL

110V countries 3-1/2HP
240V countries 2-1/2HP

CAD/CAM SOFTWARE OPTIONS

Note: Software purchased through Forest Scientific Corporation or an authorized dealer of Forest Scientific Corporation will have Free installation and support assistance. If software is purchased directly from the Vendor or online, we will offer support at a fee. Realize, the software from another vendor will need customization and configuration to work properly.

For Lathe, Mill, Router, Plasma **MasterCAM** *Educational License with a machine*

Single User with machine or upgrade purchase \$ CALL

CAD/CAM for CNC Routers & Mills

40 educational seats in a single lab or classroom

Full CAD/CAM Products

Cut2D Pro \$ CALL VCarve Pro \$ CALL

Upgrade from Cut2D to VCARVE \$ CALL

Aspire 3D \$ CALL includes setup and curriculum

Upgrade from Cut2D to Aspire \$ CALL

CorelDraw Academic Current Version

For Lasers

CorelDraw Single seat \$ CALL Each

Corel Draw 50 Seat License \$ CALL

Have you ever wondered why the name Forest Scientific?

Forest Scientific Corp was founded and is headquartered in Tionesta, Forest County, Pennsylvania. Our name is from our county. visit <http://www.forestcounty.com>

The picture to the right is our 67,000 square foot factory located on the north edge of Tionesta along the Allegheny river. We are 3 hours from Pittsburgh, Cleveland, and Buffalo.



Scan this QR to find the Router Consumables order form



Scan this QR to find the Powermax 45XP Consumables order form also Duramax torch 65 & 85



Scan this QR to find the Powermax SYNC Consumables order form



Scan this QR to find the most up to date catalog updates, spec sheets, & brochures



If any of these codes fail to work, call 1-800-956-4056 for assistance.

Plaser Clean Room Metal Cutting

Affordable, Professional Alternative for Cutting Steel and Aluminum



Cut:
Steel
Aluminum
Copper
Brass



Fully Enclosed
Perfect for an Engineering Lab

Run in a Clean Room

Cut Steel Faster than a WaterJet
with Lower Operational Cost

Model	Travel	Plasma	2K Fiber Laser Pro
Plaser CRP2418	24" X 18" Y 610 mm x 460 mm	\$ CALL	\$ CALL
Plaser CRP3618	36" X 18" Y 920 mm x 460 mm	\$ CALL	\$ CALL
Plaser CRP48X18	48" X 18" Y 1200 mm x 460 mm	\$ CALL	\$ CALL
Plaser CRP48X24	48" X 24" Y 1200 mm x 609 mm	\$ CALL	\$ CALL
Optional in room filtration system			\$ CALL
Optional system to vent fumes outside if there is direct access			\$ CALL
Optional ultra quiet dry air compressor			\$ CALL

A fraction of the price of most fiber lasers that can only engrave metal

Downdraft grid table and ports to exhaust fumes outside or to a filtration system

Depending on the operation and material compressed air, argon, O2 or N2 may be used

Automatic torch height Automatic voltage detection

Plasma versions include fine and standard cutting consumables

Plasma Laser-like Quality Plasma system Fine Piercing to 1/4" Steel or Aluminum

Plasma Able to edge cut up to 7/8" steel and 1/2" aluminum

Fiber Laser 240V 1PH models cut up to 16mm steel to 6mm aluminum varied by shininess



Catalog # 2024 Q1 - NP

Forest Scientific Corporation
PO Box 510, 668 Elm Street
Tionesta, PA 16353, USA
814-463-5006 Voice 814-463-0292 Fax
1-800-956-4056 Toll-Free sales@forestscientific.com

DEPCO ENTERPRISES, LLC
PO BOX 178
PITTSBURG, KS 66763
SALES@DEPCOLLG.COM
800.767.1062
WWW.DEPCOLLG.COM